

ARPA PRESENTATIONS

March 29th

Tuesday Morning

9:00-9:15	Call to Order / Pledges / Welcome
9:15-9:20	Presentation Set up
9:20-9:40	Presentation #1 – Slide – Jo Co Emergency Services District No. 1 – Tom Foster, Executive Director
9:40-9:50	Q & A
9:50-10:00	Switch / Set up next
10:00-10:20	Presentation #2 – Slide? – Bread Connection – Becky Hightower, Executive Director & Fernando Rodriguez, Board Member
10:20-10:30	Q & A
10:30-10:40	Switch / Set up
10:40-11:00	Presentation #3 – Handout – Pecan Valley Center – Coke Beatty – Executive Director
11:00-11:10	Q & A
11:10-11:20	Switch / Set up
11:20-11:40	Presentation #4 – Slide – Alvarado Helping Hands for Jesus – Lewis King, Executive Director
11:40-11:50	Q & A
11:50-12:00	Wrap up for lunch / Recess till 1:30

Tuesday Afternoon

12:00-1:30	Lunch
1:30-1:45	Welcome Back
1:45-1:50	Presentation Set up
1:50-2:10	Presentation #5 – Slide? – HOPE Clinic Cleburne – Diane Westcott, Executive Director Presenter: Dr. Steve Johnson, Medical Director
2:10-2:20	Q & A
2:20-2:30	Switch / Set up
2:30-2:50	Presentation #6 – Slide/Handout – Blue Water Oaks – David Preisner, Superintendent
2:50-3:00	Q & A
3:00-3:10	Switch / Set up
3:10-3:30	Presentation #7 – Slide – Burleson ISD & THR Huguley – Dr. April Chiarelli, Chief Academic Officer, BISD & Courtney Peets, BSN, RN, NCSN, Executive Director of Health Services, BISD
3:30-3:40	Q & A
3:40-3:50	Switch / Set up
3:50-4:10	Presentation #8 – Slide? – Texas Health Huguley – Russ Weaver, Regional Vice President
4:10-4:20	Q & A
4:20-4:30	Wrap up / Adjourn

MAR 29 2022

No Action

The Bread Connection
American Rescue Plan Project
Submission Form

Becky Hightower: Executive Director
The Bread Connection
408 West Henderson Cleburne, Texas
PO Box 813 Keene, Texas
(469) 456-1885
Thebreadconnection50@gmail.com

American Rescue Plan Submission Form

Project Name:

Updating Van and Warehouse Equipment

Primary Point of Contact:

Becky Hightower

817-239-4547

hightower.becky@yahoo.com

Project Description:

The Bread Connection functions as a warehouse model food bank, that means we service and assist other charitable organizations. The majority of this food from our donors (mostly grocery stores) is delivered to the many charitable organizations located in and around Johnson County. Prior to the covid outbreak we were feeding an estimated 2 thousand people per month. After the outbreak, that number has increased to well over 10 thousand people per month. Having said that, our 1999 van is worn out. Which has resulted in us having to use the founder's personal truck. Although helpful, the truck does not offer near the carrying capacity that we need to keep up with the increasing demand. That is why it is imperative that we secure a new vehicle in order to continue providing this vital service. The community of people that we are serving grows by the week; and with the rising gas prices and inflation the need for our services will only continue to rise. We are now moving an estimated 11 tons of food monthly. A majority of this food arrives at our warehouse by truck and for this reason we are also asking for a walk behind forklift to further assist in our efforts.

Charitable organizations that we deliver food to include: Operation Blessing, Harvest House, Alvarado Helping Hands for Jesus, Fort Worth Hope Center, New Life Ministry, Broken Pieces Ministry, Family Crisis Center, Keene Community Food Distribution, East Cleburne Community Center, Clean Slate, Serenity, No Turning Back Ministry, Happy Hill Farm, SWAU Student Pantry, Buena Vista, and Fireside Trails.

Project Location:

Our building and warehouse are located at 408 West Henderson in Cleburne, Texas.

Project Budget: \$105,500

Est. Van Cost \$45,825 @ 2 = \$91,650

Est. Forklift Cost \$13,850

Total Project Cost \$105,500

Project Time Frame: Ongoing

SUMMARY

\$45,825

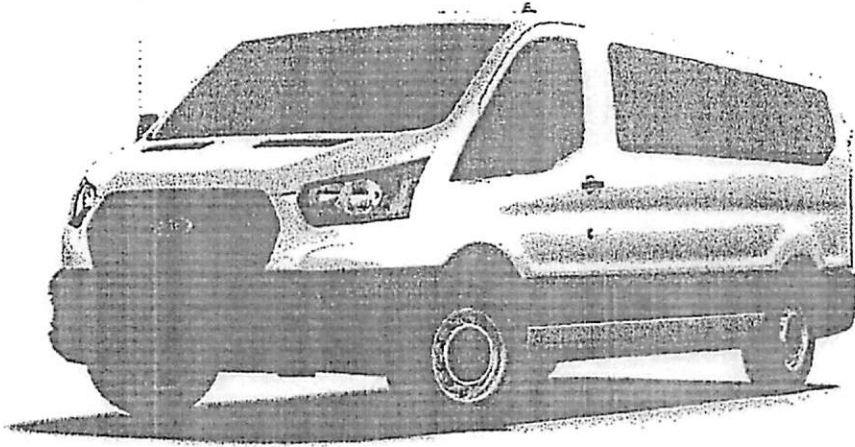
ESTIMATED NET PRICE ⁵⁵

\$779

PER MONTH FOR 60 MONTH FINANCE ⁵⁶

Custom Order Explained

Pre-production model shown throughout



EXTERIOR ^{S4}

Oxford White	\$0
16" Steel Wheels with Full Silver Wheel Cover	\$35
235/65R16C 121/119 R BSW All-Season Tires	\$0
Short Arm Power Adjusting, Manual-Folding Mirrors	\$0
Windows – Tinted Glass	\$0
Spare Tire and Wheel	\$0
Roof Marker Lamp Delete	\$0
Windows – Fixed Glass, All-Around	\$0

Pre-production model shown throughout

POWERTRAINS ^{S4}

3.5L PFDI V6 Engine	\$0
Rear-Wheel Drive	\$0
10-Speed SelectShift® Automatic Transmission	\$0
3.73 Non-Limited Slip Axle	\$0

Custom Order Explained

PRICING SUMMARY

BASE MSRP ^{S1}	\$42,600
OPTIONS ^{S4} & ACCESSORIES ^{S8}	+ \$1,530
DESTINATION CHARGES ^{S77}	+ \$1,695
TOTAL MSRP ^{S16}	= \$45,825
ESTIMATED NET PRICE ^{S5}	= \$45,825
MONTHLY PAYMENT ^{S6}	\$779

Finance based on \$4,583 down payment,
60 month term and 5% APR, \$0 trade-in-value

YOUR ZIP CODE 76033

CLOSEST FORD DEALER

Cleburne Ford

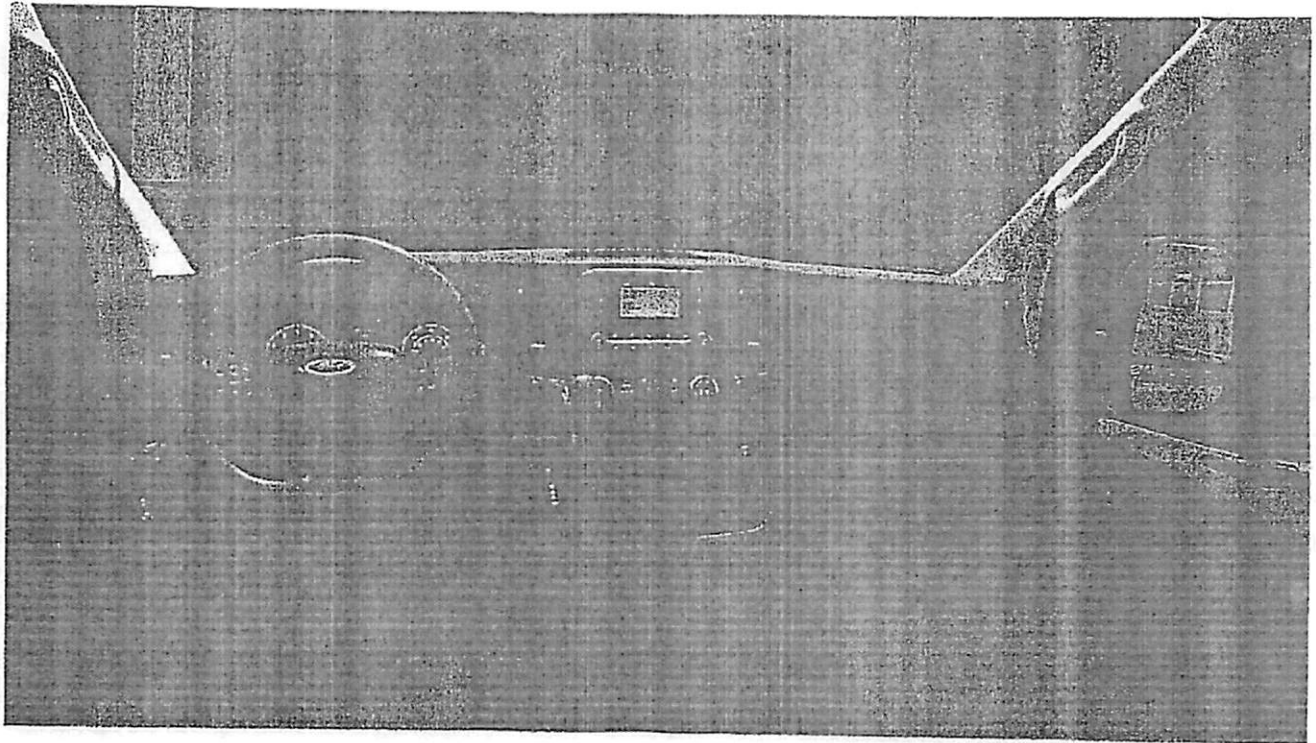
6.58 miles away

(833) 248-5994

Your Configuration:

Pricing shown for Zip code 76033 as of March 10, 2022

DISCLOSURES 



INTERIOR ^{S4}

Ebony	\$0
Ebony Cloth, 2-Way Manual Driver and 2-Way Manual Passenger Seats	\$0
Floor Covering – Front and Rear Vinyl	\$0
Illuminated Sun Visor	\$0
B-Pillar Assist Handle (Low Roof)	\$0
Rearview Mirror	\$0
Seat Configurations – Fifteen (15) Passenger	\$1,495
Front and Rear Auxiliary A/C and Heater	\$0
Full Rear Compartment Lighting	\$0
4" Multi-Function Display with AM/FM Stereo	\$0

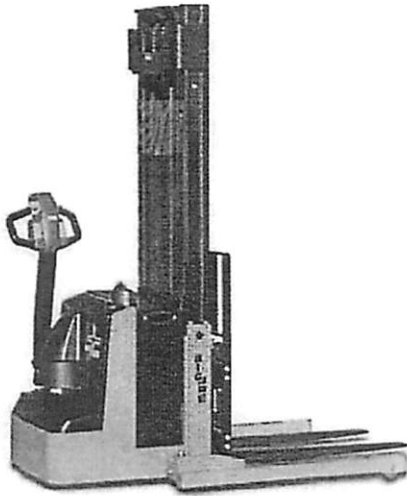


Prepared By:
Ross Bradley
Abilene TX 79601 USA
VBar Equipment Co.
6298 E I-20
(325) 400-5993

Created On: 03/16/2022

Quoted Price:
\$ 13,850.00

2022 BIG JOE PDS25-106 PDS25-106



Big Joe PDS25-106 \$13,200 - Base Price \$11,600 Maint Free Battery 4 pack inc charger \$1,600 42" Forks, 36" Back rest - Checking on Lead Time, The 130 is generally in stock and ads \$200

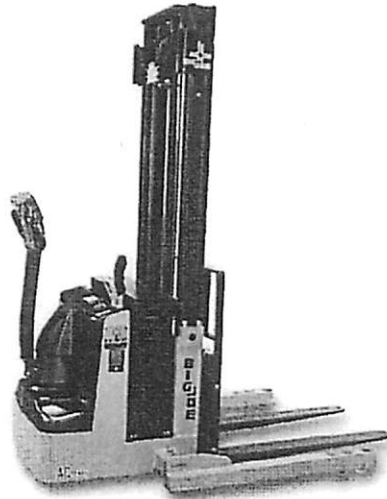
List Price	\$ 13,200.00
Quoted Price	\$ 13,200.00
Shipping	\$ 650.00
Tax	\$ 0.00
Total	\$ 13,850.00



PDS25

Power Drive Straddle Truck

SHORT TURNING RADIUS MAKES THE PDS AN EXCELLENT CHOICE FOR NARROW AISLES, TOOL ROOMS OR STREET LOADING APPLICATIONS



CAPACITY

2500 lbs. at 24" load center

BATTERY

Compartment: 26.37" x 9.06" x open. Anderson 175 Gray—A-11 Minimum battery weight 340 lbs.

SPEED

24-volt ZAPI ACO Travel Controller

TRAVEL

Variable from 0 mph to 3.4 mph empty
Variable from 0 mph to 3.1 mph loaded

LIFT

Up to 30.9 fpm empty.
Up to 17.6 fpm loaded

LOWERING

Up to 18.4 fpm empty.
Up to 17.8 fpm loaded

WEIGHT

1943 lbs. Chassis Only

TIRES / WHEELS

DRIVE

9" x 3" polyurethane

DUAL LOAD

(2) 3.9" x 2" polyurethane

HYDRAULICS

Lift cylinder is hard chrome. Pump unit includes motor, gear pump, and solenoid. Pressure compensated lowering valves regulates lowering speeds.

ELECTRICAL

ZAPI AC travel controller and AC drive motor provides high torque throughout the entire drive range. Regenerative braking and brushless design drastically reduces maintenance.

Travel speed remains constant relative to throttle position regardless of the load on truck. Automatic resetting circuit breaker and one piece micro switch design complete the system.

BRAKES

Electromagnetic brake is mounted on motor armature shaft multiplying the braking power through the ZF GK10 transmission.

Brake is applied when control arm is in the vertical or horizontal handle position. Travel speed is reduced when forks are above 12" fork height. Position hold resists roll back on ramps.

CONTROLS

Travel, lift, and lower functions are located in the ergonomic operator handle, designed to allow operation with either hand. Wrap around guard, reversing switch, thumb control, and horn are standard.

Crawl speed function while steer handle is slightly back-tilted from vertical. This allows for easy maneuvering at reduced travel speeds in tight places.

TRANSMISSION

Vertically mounted drive motor is direct mounted to gear housing. Oil bathed bevel gear drive-train transfers power to axle. State of the art optimized gear technology supplies advantages such as zero maintenance, low noise level, high efficiency and high performance.

FRAME AND MAST

Bolt-on high visibility I-beam construction, lift cylinders are positioned in outer I-beam for good operator visibility through mast. Dual lifting chains.

Three inch wide adjustable straddle legs allow easy operation in racked aisles. Straddle leg inside dimension (ID) can be set at 38" to 50" in 4" increments; 42" to 50" with the triple stage mast

Class two ITA fork carriage with 36" tall load back rest.

BEARINGS

DRIVE WHEEL-Tapered roller bearings sealed in oil bath

LOAD WHEELS-Sealed ball bearings

ACCESSIBILITY

Removal of two piece power head cover exposes major components for inspection and maintenance. Drive wheel is removed with one nut.

STANDARD EQUIPMENT

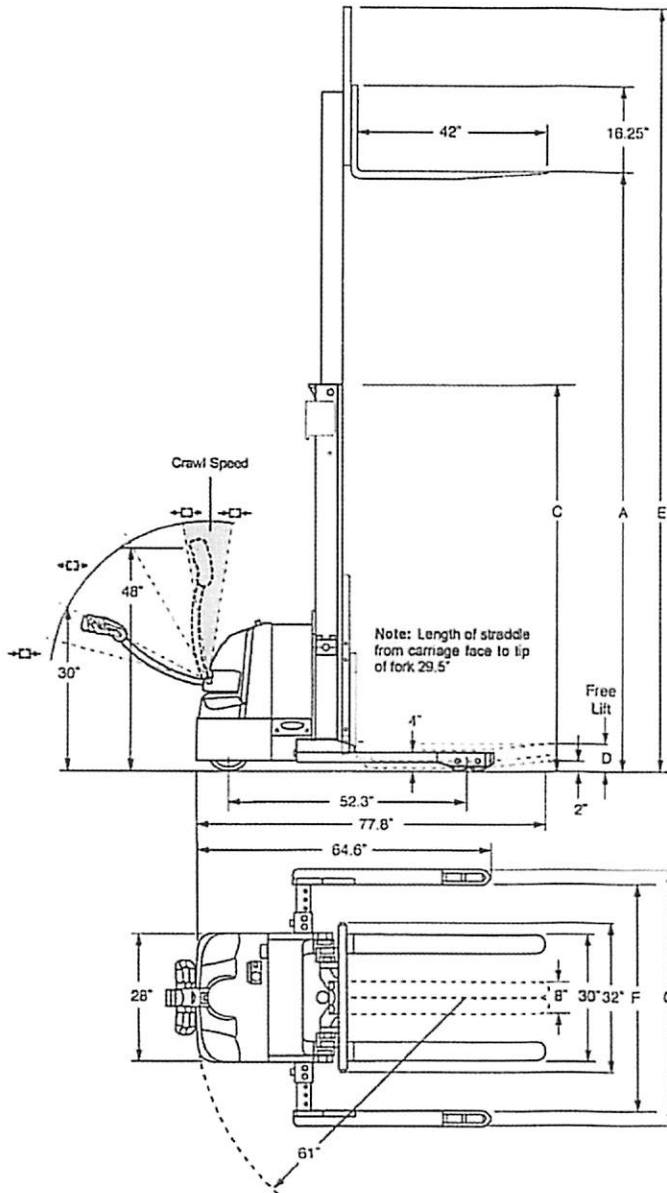
- Adjustable Straddle Legs
- 3" Wide Straddle Leg
- Regenerative Braking
- Creep Speed Handle Control
- Gas Assist Spring Handle
- Low Battery Interrupt
- Hour Meter BDI Combo Gauge
- Key Switch

OPTIONAL EQUIPMENT

- 48" tall load backrest
- Cold conditioning
- Four Pack Power MF 224 AH / 5.4 kwh 110VAC plug-in charger
- Industrial Battery 255 AH 5.9 kwh

PDS 2500 Lbs. Capacity Power Drive Straddle Truck

DIMENSIONS

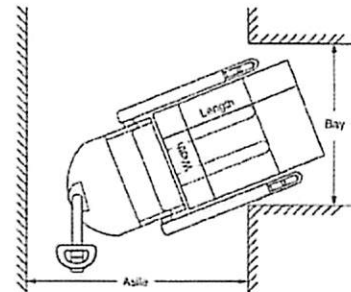


Aisle Guide

PDS25 - Right Angle Stacking

Load Width	Load Length		
	36"	40"	48"
36"	63.5"	63.5"	63.5"
40"	64.5"	64.5"	64.5"
48"	69.5"	69.5"	69.5"

For ease of use add 8" to aisle dimension listed



Aisle dimensions listed above assume the minimum bay width to be straddle OD plus 5" (2.5" on each either side of straddle leg). Straddle OD is the load width plus 8". Truck performance may vary due to application requirements and changes in model design.

Add: 2" to aisle for model PDS25-157 with triple stage mast.

Model #	Mast	Lift Height	Col Height	Free Lift	Ext Height w/LBR	Adjustable Straddle Leg 4" Increments		Weight Chassis Only
		A	C	D	E	F	G	
2500 Capacity @ 24" Load Center ITA Class II Fork Carriage								
PDS 25-106	Two Stage	106	71	6	142	38 to 50	44 to 56	1726
PDS 25-130	Two Stage	130	83	6	166	38 to 50	44 to 56	1816
¹ PDS 25-157	² TriMast	157	72	50	193	42 to 50	48 to 56	2156

¹Derate 500 lbs. above 142"

¹Consult factory for derate

⁴Minimum straddle ID 42"

²Estimated shipping weight without battery

About the Bread Connection

The Bread Connection is a 501(c)3 faith-based charity in Cleburne, Texas. We operate as a warehouse model food bank distributing bread, pastries, produce, meats, and canned goods to charitable organizations that provide aid to those in need. We partner with food banks, grocers, churches and businesses throughout the greater Dallas / Fort Worth area. We believe we are filling a need that is often overlooked. We distribute foods at the point it is needed most when it is needed most.

Beliefs: We believe to live hunger free is a fundamental human right. It is our conviction that food insecurity and hunger impedes the development of character and the realization of potential.

Mission: Our mission is to provide nutritional support for residents within the communities we serve and to assist like minded organizations.

Vision: Our intention is to develop a culture dedicated and equipped to seek, support and partner with organizations committed to serving disadvantaged and marginalized citizens. Our primary challenge is to perfect our ability to meet the needs of those facing food insecurity. Collaborating with our partners we intend to continually develop strategies that will insure the realization of our mission.

Subject Commissioners Court
To: [becky hightower <hightower.becky@yahoo.com>]
From HEATHER HIGHTOWER <chuggiepie@hotmail.com>
Date Mon, Mar 28, 2022 at 8:09 PM

To Whom it may concern,

My name is Becky Hightower. I am the Executive Director on The Bread Connection Board. We are a non-profit 501 (C) (3) ministry. We meditate on Mathew 25:35 and draw on the Lord's strength to provide food to over 10,000 people each month. We also assist several food banks and distributions to ensure reduced food waste. Every week the Lord blesses us with more and more food as well as more and more places to distribute. Since COVID, people who are struggling with food insecurities has increased. We are needing funding to help support the amount of food we have coming in as well as the labor and equipment to distribute it. We are needing cargo vehicles as well as fork lifts. Right now we are relying on volunteers but it would be in our best interest to have a few paid employees. This is just a few reasons why we are praying to receive the ampule amount of funding. We have been recognized through out the community and Johnson county. We have received a Community Improvement Award, as well as Certificate of Appreciation from Operation Blessing and an Outstanding Humanitarian Service Award from East Cleburne Community Center. We have also been supported and worked closely with United Way, Crisis Center and several churches around Cleburne. We greatly appreciate your consideration and hope you have a blessed day.

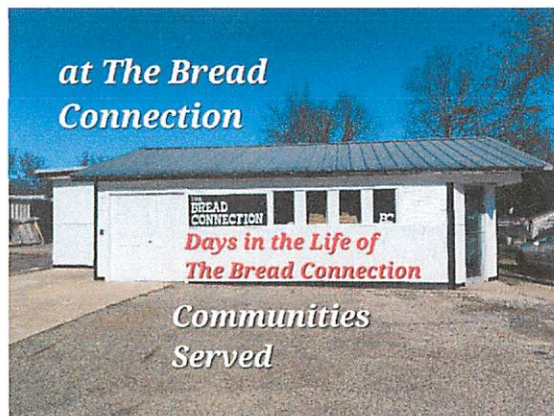
Thank You

Becky Hightower

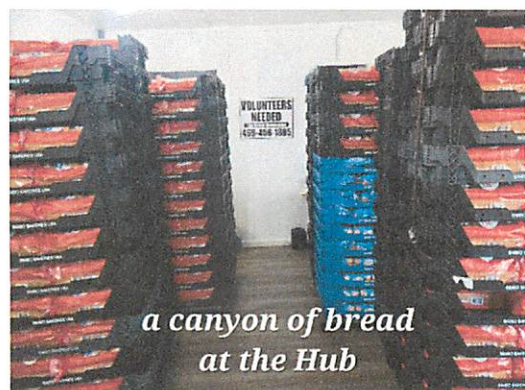
The Bread Connection Executive Director Board Chairman

Thebreadconnection50@gmail.com

The Bread Connection is a 501(3)c charity in Cleburne, Texas. We operate as a warehouse model food bank; meaning we serve “communities” instead of individuals clients. We distribute bread, pastries, produce, meat, and can goods throughout Johnson County and communities in Somervell, Tarrant and Dallas County. We also work to keep local pantries well stocked.



We receive donations from HEB – Kroger’s and Walmart



A Sampling of Meats that we may have on Hand



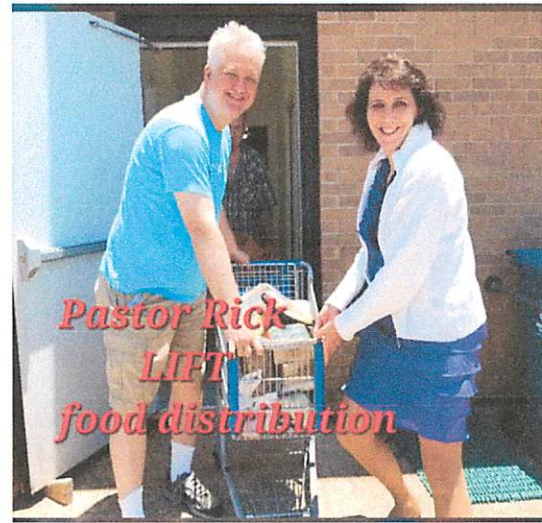
We Distribute Hundreds of Pounds of Produce Monthly.

Serenity Church Metro Mobile Pantry operates in South Dallas.



More of the Communities We Serve Over

Communities Served



Lift serving 300 families monthly



Served over 474,520 meals in 2021



Broken Pieces and Henderson St Baptist Weekly Soup Bowl



Colonel's Corral
Currently Serving 12 Homeless Vets



- Other Communities We Serve:
- No Turning Back Prison Ministry
 - Happy Hill Farm
 - Senior / Section Apartments
 - Alvarado Senior Apartments
 - Buena Vista Senior Community



https://www.cleburnetimesreview.com/news/bread-connection-ties-together-needs/article_fe9f0496-16e7-11ea-80df-a737b99ae8d7.html

FEATURED

Bread Connection ties together needs

By Matt Smith/msmith@trcle.com

Dec 5, 2019



Lions President Tina Pollack, left, visits with Randy Hightower, president of the Bread Connection, and Becky Hightower, chief secretary. The local faith-based organization works with other food pantries and charitable organizations to distribute food where it's needed when it's needed.

Lions President Tina Pollack, left, visits with Randy Hightower, president of the Bread Connection, and Becky Hightower, chief secretary. The local faith-based organization works with other food pantries and charitable organizations to distribute food where it's needed when it's needed.



Matt Smith/CTR



Bread Connection President Randy Hightower joked that he and his wife, Becky Hightower, who serves as the organization's chief secretary, probably went about things in reverse order.

What began several years ago as a simple desire to help community members in need quickly grew beyond the couple's wildest expectations.

"It was just a grass roots deal really," Randy Hightower said. "We started small but then people started to hear about us and started calling. It's a God thing so we just keep working at it basically seven days a week now."

The Hightowers discussed their organization during Wednesday's weekly luncheon of the Cleburne Lions Club.

A faith-based charity, and a 501(C)(3), The Bread Connection distributes bread, pastries, produce, meats and canned goods throughout and beyond Johnson County.

"I think of the Bread Connection as a hub," Randy Hightower said. "We're at the center of the hub and the communities we serve are like the spokes and the outer part of the wheel are our partners and volunteers."

Randy and Becky Hightower quoted Matthew 25:35, "I was hungry and you fed me," and John 6:35, "I am the bread of life. Whoever comes to me will never be hungry again," as the unofficial mottoes/mission statements behind the Bread Connection.

Although the organization directly helps those in need at times, it's not a food pantry per se, Randy Hightower said. The organization functions more as a conduit between other area charitable organizations and a facilitator to ensure that food gets where it needs to be when it needs to be there.

"Say one food bank gets a pallet of bananas in the morning and distributes half throughout the day," Randy Hightower said. "They close at 2 p.m. and will be closed three days, by which time the rest of the bananas will have gone bad. Now say another food bank gets 500 dozen eggs, which is more than they can distribute or store.

"So they'll call us and we'll take the bananas and deliver them to another food bank that's opening the next day. That way they don't go to waste and more people get fed. We'll try to find another food bank that needs eggs and take the extra eggs from the first one there. So again, more efficient distribution and needs met."

The Bread Connection helps support the Johnson County Family Crisis Center, No Turning Back Prison Ministry, Broken Pieces Ministry Heights Church, Ascension Lutheran Church, St. Mark United Methodist Church and many more.

The Presbyterian Night Shelter in Fort Worth, for examples, provides 1,500 meals per day to homeless individuals.

The Bread Connection works with organizations that provide food at transitional housing for recently released former inmates and transitional housing for returning veterans as well as organizations working with those battling substance abuse.

That food provided makes a huge difference, said one man in a testimonial video Becky Hightower played. Many dealing with alcohol or drug abuse challenges need for food having lost jobs and/or been kicked out of their homes.

Other needs are likely less obvious, including a food pantry started by an administrator at Southwestern Adventist University.

"People generally don't think about something like that," Randy Hightower said. "But you have a lot of exchange students there and a lot of students in general who don't have a lot of money and may need help with just the basics."

The organization helps bring food to those living in senior living centers and Section 8 housing as well. One client, in the same testimonial video, discussed how she lives on a fixed income and how help with food makes a huge difference toward her quality of life.

Help is needed, the Hightowers said, through prayer, financial donations and volunteers.

Especially needed, Randy Hightower said, is warehouse space to store food. Demand and growth have rendered the Bread Connection's current facility too small to meet needs.

To volunteer, or for information on donating, call 817-487-6898.

Through those and other actions, the Bread Connection fills an overlooked niche, Randy and Becky Hightower said.

“We distribute foods in real time,” Randy Hightower said. “Where it is needed most and when it is needed most. Instead of the hungry coming to us we go to the hungry.”

A small selection of the partners the Bread Connection works with include H-E-B Grocery in Cleburne, Walmart Distribution Center, Grandview Area Food Bank, Spirit of Sharing Food Bank, Operation Blessing, The Bridge Food Bank and others.

Bread Connection's Christmas special delivery

By Matt Smith/msmith@trcle.com Dec 31, 2019



The Bread Connection founders Randy and Becky Hightower helped brighten the Christmas of children at the Family Crisis Center of Johnson County thanks to an unexpected bumper crop of toys.

What began as a one-day pick up project quickly blossomed beyond the Hightower's wildest expectations.

"People got wind of what we were doing and would call up to ask if we could help out and things just kind of went from there," Randy Hightower said.

The Bread Connection, a faith-based charity and 501(C)(3), distributes bread, pastries, produce, meats and canned goods throughout Johnson County and beyond.

Thank generous Metroplex donors for the toys.

"A lady up in the Metroplex started a toy drive through her charity," Randy Hightower said. "They ended up getting way more than they needed and she had no idea what to do with the excess toys. She contacted my son, who is pastor of a church up there, and he told her that he knew exactly how to help her out."

The church took some to distribute to children in need but still had enough left over to donate 200 plus toys to the Bread Connection.

"There's dolls, trucks, board games, paint-by-number kits, plenty of toys for both boys and girls," Randy Hightower said. "There's a lot of stuffed animals, which are great for small children and then toys older children would be interested in."

The Crisis Center seemed the obvious destination.

"We've been going out there once a week for a while now to take food," Randy Hightower said. "We figured the toys might be needed because they always have 15 or 20 kids out there at any given time and they also have children and others who come in for counseling sessions so whatever they didn't give out for Christmas they can give out through the rest of the year."

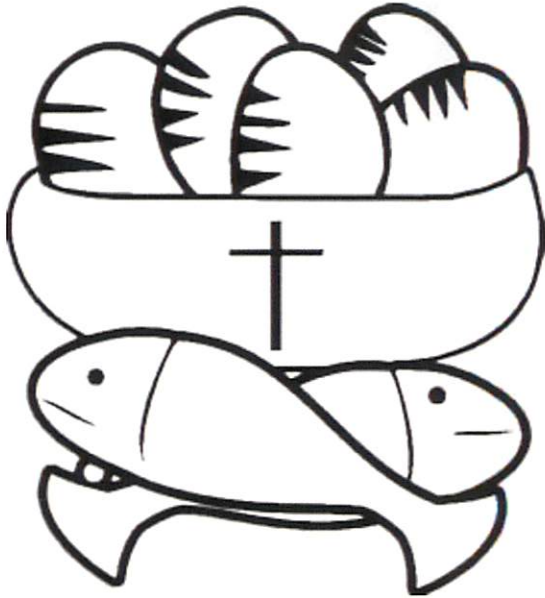
In addition to the toys, Randy and Becky Hightower delivered apples, oranges, frozen pizzas, bread, pies, cakes, gift wrapping paper and socks to the Crisis Center the week before Christmas.

All of which is greatly appreciated, and needed, Crisis Center Program Director DeAnne Derrick said.

“The toys are a wonderful addition right before Christmas and something that will help brighten our children’s holiday,” Derrick said. “As for the rest, the Bread Connection has relieved a huge burden for the center. For every food item that is donated, our clients are receiving nutritious food and the center is not having to take money from our already stretched budget to provide it.”

The Crisis Center provides crisis intervention, advocacy, support and a safe haven 24 hours a day for victims of domestic or sexual violence.

the Bread Connection



*I was hungry and you fed me
Matthew 25:35*

Office:

408 West Henderson
Cleburne, Texas 76033

469-456-1885
817-239-4547

www.thebreadconnection.org
thebreadconnection50@gmail.com

the Bread Connection

the Bread Connection is a 501(c)3, faith-based charity in Cleburne, Texas. We distribute bread, pastries, produce, meats, and canned goods throughout Johnson County and beyond. We began in 2015 and distribution has grown steadily. We believe we are filling a niche that is sometime overlooked. We distribute foods in *real time* or where it is needed most when it is needed most. We also facilitate area food banks as noted in the **examples**. (*back page*)

Instead of the Hungry coming to us



to the Hungry

We work within a network that includes:

- HEB Grocer
- Wal-Mart Grocer
- Kroger Grocer
- Dairy Queen Restaurant
- Grandview Area Food Bank
- Spirit of Sharing Food Bank
- Fort Worth Hope Center Food Bank
- Operation Blessing Food Bank
- The Harvest House Food Bank
- Helping Hands for Jesus Food Bank
- Somervell County Food Bank (*Glen Rose*)

....churches and organizations that serve those in need.

Working with Area Food Banks

Example 1

Food Bank A gets a pallet of bananas in the morning. Throughout the day they distribute half the pallet. They close at 2:00 and are closed for 3 days. By the fourth day the bananas have gone bad.

Bananas Wasted! People not Fed!

Instead, at 1:00 Food Bank A calls the Bread Connection and donates the bananas. In turn, tBC knows Food Bank B is closed that day but will open the next morning. That afternoon the bananas are delivered to Food Bank B. The next morning people receive fresh bananas to take home.

Fresh Bananas! People Fed!

Example 2

Food Bank A receives 500 dozen eggs; more than they can distribute or store. They call the Bread Connection and donate half the eggs. Several miles away Food Bank B, with different clients, have no eggs. The bottom line

More Efficient Distribution

Communities Served:

- **Johnson County Family Crisis Center** (*women's shelter*)
- **No Turning Back Ministry** (*prison ministry - transitional housing*)
- **Colonel's Corral** (*veteran's transitional shelter*)
- **Broken Pieces Ministry** (*weekly soup bowl*)
- **New Life Ministries** (*weekly soup bowl*)
- **Victory Temple Ministries** (*recovery shelter*)
- **Happy Hill Farm**
North Central Texas Academy (*underprivileged student boarding*)
- **Alcohol and Narcotics Anonymous** (*recovery*)
- **Southwestern Adventist University** (*campus pantry*)
- **Serenity Church Metro** (*mobile food pantry; inter-city Dallas*)
- **YMCA** (*food distribution*)
- **East Cleburne Community Center** (*youth and senior programs*) *and other charitable organizations*

Section 8 and Senior Living Apartments:

- **Fireside Trails Apt** (*Keene*)
- **Buena Vista Senior Living Apt** (*Cleburne*)
- **The Villas** (*family and seniors*)
- **Alvarado Senior Apt**

Donations

Donate at:

www.thebreadconnection.org

Mail Donations to:

The Bread Connection
PO Box 813
Keene, Texas
76509

*I am the Bread of Life.
Whoever comes to me will
never be hungry again.
John 6:35*

CLEBURNE TIMES-REVIEW

THURSDAY, SEPTEMBER 2, 2021 | cleburnetimesreview.com | \$1

Locals reach out to Louisiana

Charities, businesses
offering hurricane relief

BY MATT SMITH
MSMITH@TRCLE.COM

The timing was fortunate, Bread Connection Director Randy Hightower said.

"We got a call from Harvest House Saturday that they

had a big bread donation for us," Hightower said. "Then, that same day, got another call from Walmart with a big bread donation. Both give us regular donations, which we disperse where they're needed."

The donations accounted for 212 boxes of bread, buns and other items.

"That's five pallets about eight

high and about 3,400 pounds of bread," Hightower said. "Our little storage place was filled."

Unsure what to do with the bounty, Hightower's wife, Becky Hightower, called Lewis King, executive director of Alvarado Helping Hands For Jesus.

SEE HELP, PAGE 3



Courtesy photo

Workers load trucks with bread and other food bound for Hurricane Ida victims in Louisiana.

FOOTBALL

Ready for Week 2

Over 600

people

indicate expanded obituaries

Isebelle Stewart Patterson October 11, 1934 - March 24, 2022



Arlington, Texas - Isebelle Patterson, age 87, of Arlington, TX, passed away Thursday, March 24, 2022, after a brave fight with shingles and congestive heart failure. She was a long-time resident of Alvarado, TX.

Isebelle was born October 11, 1934, in Jal, NM, the youngest of her mother's four children and her father's thirteen children.

Isebelle is preceded in death by her husband, Morin Baxter Patterson; father, Nathan Lorenzo Stewart; mother, Annie Laura (Lee) Stewart; nine half-siblings: brother, Nathan Lacy Stewart; sister-in-law, Lois (Green) Stewart; brother, Lee Stewart; sister-in-law, Billie Lou (Allred) Stewart; sister, Bobby Nelda (Stewart) Tuck; brother-in-law, Henry Tuck; daughter-in-law, Kathryn Lee White; several beloved nieces and nephews, and many dear friends. She dreamed of the reunion she is now celebrating with them in Heaven.

Isebelle, also known as Ise, Aunt Ise, Momma, Mema, Grandma, and Great-Grandma, is survived by her daughter, Catherine Annette Patterson; son, Michael David Patterson; daughter-in-law, Elonda Fay (Pierce) Patterson; daughter, Laura Bell (Patterson) Smith; son-in-law, Timothy Charles Smith;

grandchildren: Paul Michael Tanner, Richard Dewayne Tanner, wife Sonya Marlene Tanner, Cody Hammond, Christopher Hammond, Jonathon Michael Patterson, wife Amanda Marcella (Bentley) Patterson, Tommy Matthew Patterson, Victoria Elizabeth (Smith) Bolin, husband Brandon Wesley Bolin, and Bradley Arthur Smith; great-grandsons: David Dewayne Tanner, Austin Lucas Patterson, Giovanni Austin Patterson, Dylan Michael Patterson, Eli Wyatt Patterson, and Tatum Robert Patterson; many nieces, nephews, great-nieces, great-nephews, great-great nieces, and great-great nephews; and a multitude of beloved friends who were extended family.

Those who wish to donate to a charity in memory of Isebelle are encouraged to give to an organization that supported her in much the same way she supported others: theBreadConnection.org of Keene, TX.

Please view her FULL obituary at ckvfuneral.com.

Services to celebrate her life:

Viewing from 6-8 PM, Monday, March 28th, at Clayton Kay Vaughan Funeral Home, 200 E. Patton Ave, Alvarado, TX 76009

Funeral at 10 AM, Tuesday, March 29th, at Boulevard Baptist Church, 315 N. Burleson Blvd, Burleson, TX 76028

Burial at 12 noon, Tuesday, March 29th, at Bluebonnet Hills Memorial Park, 5725 Colleyville Blvd, Colleyville, TX 76034

"A new command I give you: Love one another. As I have loved you, so you must love one another. By this everyone will know that you are my disciples, if you love one another." John 12:34-35